

# HBA

赫希·贝德纳联合设计顾问

**DESIGN CONSULTANTS**

**3216 NEBRASKA AVENUE, SANTA MONICA, CALIFORNIA 90404 U. S. A.**

美国·加利福尼亚州·圣塔莫尼卡市·3216纳布拉斯加大道

## FORTUNE GONGGUAN

---

**BEIJING, CHINA**

**财富公馆**

中国北京

**MODEL VILLA A2**

样板屋—别墅A2

**REVISION 3 1/10/2011**

修改3 1/10/2011

GENERAL NOTES, ABBREVIATIONS AND SYMBOLS REFERENCE  
通用说明、缩写名词及符号标志参考资料

ELECTRICAL/MECHANICAL SYMBOLS

机电符号标志

ELECTRICAL POWER SUPPLY DEVICES

电源供应装置

- SIMPLEX  
电源供应插座  
—○— DUPLEX ELECTRICAL POWER OUTLET  
电源供应双插座  
—○— TRIPLEX ELECTRICAL POWER OUTLET  
电源供应三插座  
—○— QUADRAPLEX ELECTRICAL POWER OUTLET  
电源供应四插座

- WP WATERPROOF SIMPLEX ELECTRICAL POWER OUTLET  
防水电源插座  
—○— WP WATERPROOF DUPLEX ELECTRICAL POWER OUTLET  
防水电源双插座  
—○— WP WATERPROOF TRIPLEX ELECTRICAL POWER OUTLET  
防水电源三插座  
—○— WP WATERPROOF QUADRAPLEX ELECTRICAL POWER OUTLET  
防水电源四插座

- GF GROUND FAULT SIMPLEX ELECTRICAL POWER OUTLET  
接地故障电源插座  
—○— GF GROUND FAULT DUPLEX ELECTRICAL POWER OUTLET  
接地故障电源双插座  
—○— GF GROUND FAULT TRIPLEX ELECTRICAL POWER OUTLET  
接地故障电源三插座  
—○— GF GROUND FAULT QUADRAPLEX ELECTRICAL POWER OUTLET  
接地故障电源四插座

- SPLIT WIRE, SWITCHED, DUPLEX ELECTRICAL POWER OUTLET  
分线导线电源双插座  
—○— SPLIT WIRE, SWITCHED, QUADRAPLEX ELECTRICAL POWER OUTLET  
分线导线电源四插座

- S220 SPECIAL PURPOSE OUTLET  
特别用途插座  
—○— F1 FLOOR MOUNTED SIMPLEX ELECTRICAL POWER OUTLET  
地平面安装, 电源插座  
—○— F2 FLOOR MOUNTED DUPLEX ELECTRICAL POWER OUTLET  
地平面安装, 电源双插座  
—○— F4 FLOOR MOUNTED QUADRAPLEX ELECTRICAL POWER OUTLET  
地平面安装, 电源四插座

- WALL MOUNTED ELECTRICAL POWER JUNCTION BOX (PLAN VIEW)  
壁挂式接线盒 (平面图)  
—○— WALL MOUNTED ELECTRICAL POWER JUNCTION BOX (ELEV. VIEW)  
壁挂式接线盒 (立面图)  
—○— CEILING MOUNTED ELECTRICAL POWER JUNCTION BOX  
天花吊装式接线盒

- C1 C1 CLOCK (RECESSED) ELECTRICAL POWER OUTLET (PLAN VIEW)  
凹式电源插座 (平面图)  
—○— C2 C2 CLOCK (RECESSED) ELECTRICAL POWER OUTLET (ELEVATION VIEW)  
凹式电源插座 (立面图)

ELECTRICAL SWITCHING DEVICES

电源开关装置

- SWITCH  
开关  
—○— THREE POLE SWITCH  
三极开关  
—○— MULTIPLE POLE SWITCH (NUMBER INDICATES MULTIPLES)  
多极开关  
—○— TIMER SWITCH  
计时开关  
—○— MASTER SWITCH  
主开关  
—○— DOOR BELL SWITCH  
门铃  
—○— DIMMER SWITCH  
调光开关  
—○— THREE POLE DIMMER SWITCH  
三极调光开关  
—○— CONTROL/UTILITY PANEL  
总控制板  
—○— DEVICES SWITCHED TOGETHER  
控制板装置

LIGHTING FIXTURES

电灯装置

- ACCENT LIGHT/WALL WASHER  
重点照明/照壁面灯  
—○— RECESSED DOWNLIGHT  
暗藏式天花灯  
—○— WATER PROOF RECESSED DOWNLIGHT  
暗藏式防水天花灯  
—○— TRACK LIGHT  
轨道灯  
—○— SURFACE MOUNTED FLUORESCENT  
天花灯管  
—○— RECESSED FLUORESCENT  
暗藏灯管

LIFE SAFETY DEVICES

安全装置

- WALL MOUNTED EXIT LIGHT  
壁挂式逃生指示灯  
—○— CEILING MOUNTED EXIT LIGHT  
天花吊装式逃生指示灯  
—○— WALL MOUNTED SPRINKLER  
壁挂式喷头  
—○— CEILING MOUNTED SPRINKLER  
天花吊装式喷头  
—○— WALL MOUNTED SMOKE DETECTOR  
壁挂式烟雾探测器  
—○— CEILING MOUNTED SMOKE DETECTOR  
天花吊装式烟雾探测器  
—○— FIRE ALARM STATION  
火警系统装置

TELEPHONE - DATA - TV - COMMUNICATIONS

电话, 数据, 电视, 通讯

- WALL MOUNTED TELEPHONE OUTLET  
壁挂式电话插座  
—○— FLOOR MOUNTED TELEPHONE OUTLET  
地平面安装式电话插座  
—○— WALL MOUNTED HOUSE PHONE  
壁挂式内线电话插座  
—○— FLOOR MOUNTED HOUSE PHONE  
地平面安装式内线电话插座  
—○— WALL MOUNTED TELEVISION CABLE OUTLET  
壁挂式电视天线插座  
—○— FLOOR MOUNTED TELEVISION CABLE OUTLET  
地平面安装式电视天线插座  
—○— WALL MOUNTED MICROPHONE OUTLET  
壁挂式麦克风插座  
—○— FLOOR MOUNTED MICROPHONE OUTLET  
地平面安装式麦克风插座  
—○— WALL MOUNTED SPEAKER  
壁挂式扩音器  
—○— CEILING MOUNTED SPEAKER  
天花吊装式扩音器

HVAC - MECHANICAL

空调抽风系统

- WALL DIFFUSER  
墙壁式风口  
—○— THERMOSTAT  
温度调节装置  
—○— RETURN AIR GRILLE  
回风口  
—○— SUPPLY AIR GRILLE  
送风口  
—○— SLOT DIFFUSER  
风槽

GENERAL ABBREVIATIONS & SYMBOLS

缩写及符号

SHEET TITLE REFERENCE

图纸标题参考

- DT DETAIL 大样详图  
EI ELECTRICAL INFORMATION PLAN 建筑电气图  
EM ELECTRICAL/MECHANICAL PLAN 机电平面图  
FC FLOOR COVERING PLAN 地坪饰面图  
FF FIXTURE / FURNISHING PLAN 家具布置图  
EL INTERIOR ELEVATION 室内立面图  
RC REFLECTED CEILING PLAN 天花反映图  
WF WALL FINISH PLAN 墙体饰面图  
AI ARCHITECTURAL INFORMATION PACKET 建筑资料详图  
GR GUEST ROOM 客房  
IL INTERIOR LANDSCAPING PLAN 室内园林景观图  
MR MODEL ROOM 样板房  
GA GUEST ROOM ANALYSIS 客房分析  
PA PUBLIC AREA 公共地方  
IR INTERIOR RENDERING 室内效果图

MATERIAL FINISH REFERENCE

物料缩写表

- ARF ARCHITECTURAL FINISH 建筑材料饰面  
BV BRICK VENEER 砖块饰面  
CT CERAMIC TILE 瓷砖  
CL GLASS OR MIRROR 玻璃或镜子  
GYP GYPSUM WALL BOARD 石膏板  
LP LAMINATED PLASTIC 防火胶板  
MT METAL FINISH 金属饰面  
PL PLASTER 灰泥  
PT PAINT 油漆  
QT QUARRY TILE 红砖  
RF RESILIENT FINISH 弹性材料  
ST STONE 石材  
TP TEXTURED PLASTER 纹理抹灰  
UP UPHOLSTERY 软包面  
WC WALL COVERING 墙纸  
WD WOOD FINISH 木饰面

MISCELLANEOUS

杂项

- AA ARTWORK AND ACCESSORIES 艺术品及摆件  
AC ABOVE COUNTER 柜台面以上  
AFF ABOVE FINISHED FLOOR 完成地面以上  
CL CUSTOM LIGHTING 订制灯饰  
EQ EQUAL 平分  
EQUIP EQUIPMENT 设备  
FCU FAN COIL UNIT 空调风机  
GC GENERAL CONTRACTOR 总承包商  
GR GUEST ROOM FURNISHINGS 客房家具  
IF INTERIOR FURNISHINGS 室内家具  
KC KITCHEN EQUIPMENT CONTRACTOR 厨房设备承包商  
MW MILLWORK 固定装置木制品  
NIC NOT IN CONTRACT 不包括于合约内  
P PLUMBING FIXTURES 排水装置  
PF HARDWARE/FITTINGS 五金装置  
PL PLASTER 灰泥  
SF SUITE FURNISHINGS 套房家具

ROOM TYPE ABBREVIATIONS

各类房型之缩写名称

- CS CONFERENCE SUITE 会议套房  
D/D DOUBLE/DOUBLE 双套房  
DLX DELUXE SUITE 豪华套房  
ES EXECUTIVE SUITE 行政套房  
HS HOSPITALITY SUITE 残疾人套房  
JR JUNIOR SUITE 特大床套房  
KING KING 特大床套房  
MGR MANAGER'S SUITE 经理套房  
PRES PRESIDENTIAL SUITE 总统套房  
PARLOR PARLOR SUITE 高级套房  
Q QUEEN 大床套房  
T TWIN 小床套房  
U UPGRADE 升级  
VIP VIP SUITE 贵宾房

MATERIAL DESIGNATIONS

物料标记表

- FINISHED WOOD 木饰面  
ROUGH WOOD 硬木  
GLASS 玻璃  
GYPSUM WALL BOARD 石膏板  
MARBLE 大理石  
CONCRETE BLOCK 混凝土  
ACROUSTIC TILE 隔音板  
BATT INSULATION 隔热材料  
STEEL/METAL AS NOTED 钢/金属 (见注释)  
CARPET 地毯  
GRAVEL/BALLAST 砾石/垫层  
RIGID INSULATION 刚性隔热材料  
BRICK 砖  
TILE/Pavers 瓷砖/地垫  
QUARRY TILE 花岗岩  
PLYWOOD (SMALL SCALE) 夹板 (较小比例)  
PLYWOOD (LARGE SCALE) 夹板 (较大比例)

GRAPHIC SYMBOLS

符号图案表

- COLUMN CENTERLINE DESIGNATION 轴心线号  
—○— AREA DESIGNATION 区域名称  
—○— DETAIL REFERENCE NUMBER 大样编号  
—○— SHEET NUMBER 图号  
—○— ELEVATION/SECTION REFERENCE NUMBER 立面/剖面图号  
—○— SHEET TITLE REFERENCE 图号  
—○— SHEET NUMBER 图号  
—○— ELEVATION REFERENCE NUMBER 立面图号  
—○— FEAS CONTRACT ITEM REFERENCE 家具、硬件及艺术类标注  
—○— INTERIOR FINISH TYPE REFERENCE 饰面种类标注  
—○— CEILING FINISH TYPE REFERENCE 天花饰面种类标注  
—○— HEIGHT ABOVE FINISHED FLOOR 编号  
—○— ITEM NUMBER 编号  
—○— INTERIOR FINISH TYPE REFERENCE 内部材料种类标注  
—○— DETAIL REFERENCE NUMBER 大样编号  
—○— SHEET NUMBER 图号  
—○— SPOT ELEVATION 高度记号  
—○— REVISION NUMBER DESIGNATION 更改记号  
—○— SHEET TITLE REFERENCE 图号  
—○— SHEET AND AREA NUMBER 图号  
—○— DRAWING NUMBER (USED ONLY ON INDEX, ELEVATIONS & DETAILS WHEN THERE ARE MORE THAN 1 SHEET). 图号 (只用于当索引、立面及大样图有一张以上)

AR 1.1

- DENOTES AREA OF CHANGE 更改图块  
—○— DENOTES AREA OF HOLD 延期图块  
—○— ACCESSIBLE 残障人士  
—○— DOOR/KEY 门/钥匙  
—○— CONNECTING DOOR 连接门  
—○— PLAN TYPE ROOM TYPE 图号  
—○— # OF ROOMS 房间数目  
—○— DRAWING NUMBER 图号  
—○— DRAWING TYPE 图号  
—○— DRAWING SCALE 比例  
—○— PLAN ORIENTATION 指向北号

图纸标题

SHEET TITLES  
图纸标题

EL 131	ELEVATIONS	立面图	08/07/2010	•
EL 132	ELEVATIONS	立面图	08/07/2010	•
EL 141	ELEVATIONS	立面图	08/07/2010	•
EL 142	ELEVATIONS	立面图	08/07/2010	•
EL 143	ELEVATIONS	立面图	08/07/2010	•
EL 144	ELEVATIONS	立面图	08/07/2010	•
EL 151	ELEVATIONS	立面图	08/07/2010	•
EL 151A	ELEVATIONS	立面图	08/07/2010	•
EL 152	ELEVATIONS	立面图	08/07/2010	•
EL 153	ELEVATIONS	立面图	08/07/2010	•
EL 161	ELEVATIONS	立面图	08/07/2010	•
EL 162	ELEVATIONS	立面图	08/07/2010	•
EL 163	ELEVATIONS	立面图	08/07/2010	•
EL 171	ELEVATIONS	立面图	08/07/2010	•
EL 172	ELEVATIONS	立面图	08/07/2010	•
EL 173	ELEVATIONS	立面图	08/07/2010	•
EL 181	ELEVATIONS	立面图	08/07/2010	•
EL 191	ELEVATIONS	立面图	08/07/2010	•
EL 192	ELEVATIONS	立面图	08/07/2010	•
EL 193	ELEVATIONS	立面图	08/07/2010	•
EL 194	ELEVATIONS	立面图	08/07/2010	•
EL 195	ELEVATIONS	立面图	08/07/2010	•
EL 196	ELEVATIONS	立面图	08/07/2010	•
EL 197	ELEVATIONS	立面图	08/07/2010	•
EL 198	ELEVATIONS	立面图	08/07/2010	•
EL 199	ELEVATIONS	立面图	08/07/2010	•

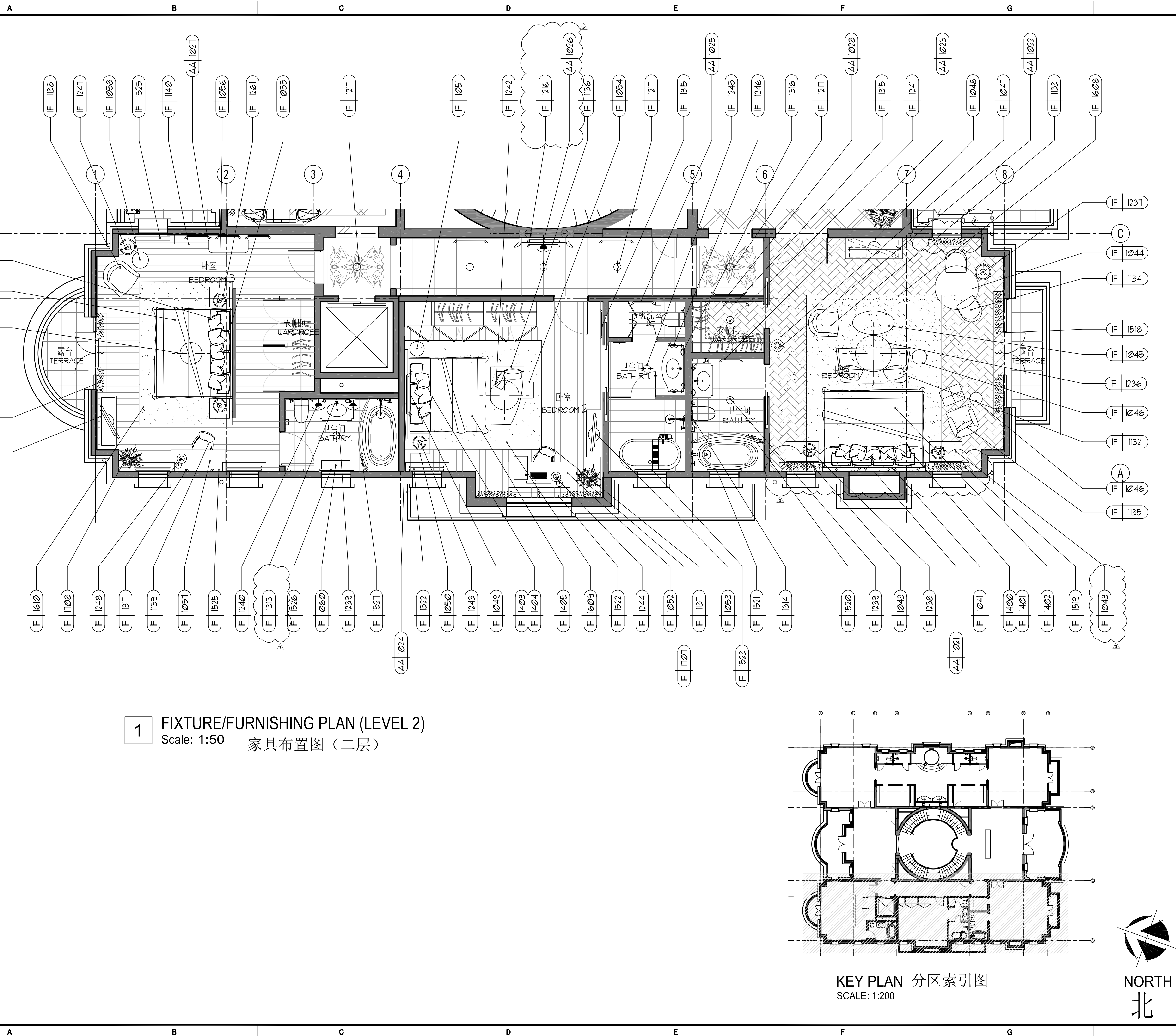
VILLA A2 - DETAILS

A2别墅 - 细节详图

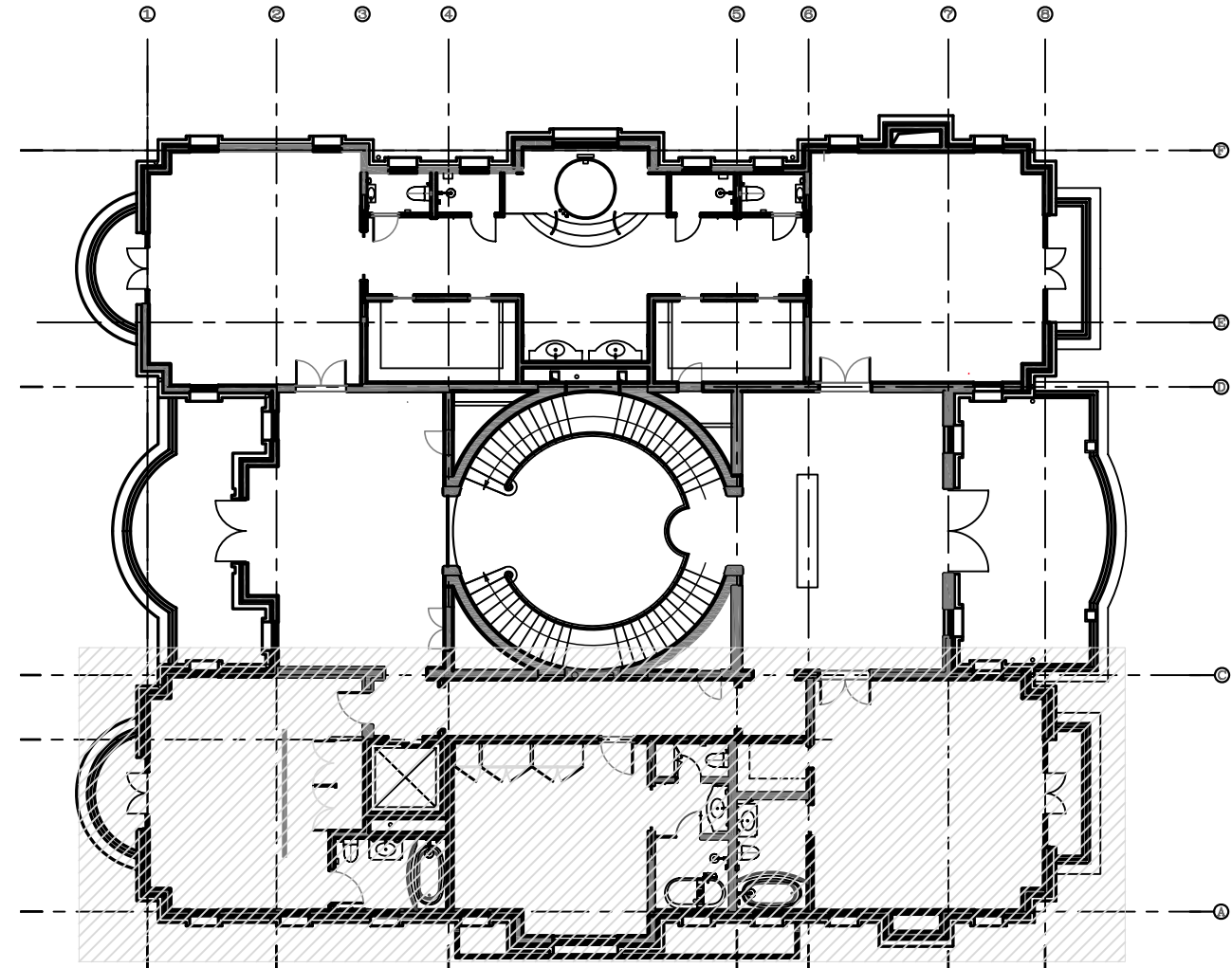
D8 11	DOOR SCHEDULE	门一览表	30/07/2010	•
D8 12	DOOR SCHEDULE	门一览表	30/07/2010	•
DT 11	ARCHITECTURAL DETAILS	建筑细节详图	30/07/2010	•
DT 12	ARCHITECTURAL DETAILS	建筑细节详图	30/07/2010	•
DT 13	ARCHITECTURAL DETAILS (CEILING)	建筑细节详图(天花板)	30/07/2010	•
DT 14	ARCHITECTURAL DETAILS (CEILING)	建筑细节详图(天花板)	30/07/2010	•
DT 15	ARCHITECTURAL DETAILS (FLOOR)	建筑细节详图(地板)	30/07/2010	•
DT 16	ARCHITECTURAL DETAILS (FLOOR/ STAIR)	建筑细节详图(地板/楼梯)	30/07/2010	•
DT 17	ARCHITECTURAL DETAILS (FLOOR PATTERN)	建筑细节详图(地板图案)	30/07/2010	•
DT 18	OPEN	空白		•
DT 19	ARCHITECTURAL DETAILS (DOOR/ WALL)	建筑细节详图(门/墙壁)	30/07/2010	•
DT 19A	ARCHITECTURAL DETAILS (DOOR/ WALL)	建筑细节详图(门/墙壁)	30/07/2010	•
DT 19AA	ARCHITECTURAL DETAILS (DOOR/ WALL)	建筑细节详图(门/墙壁)	15/12/2010	•
DT 19B	ARCHITECTURAL DETAILS (STAIRCASE)	建筑细节详图(楼梯)	30/07/2010	•
DT 19C	ARCHITECTURAL DETAILS (STAIRCASE)	建筑细节详图(楼梯)	30/07/2010	•
DT 19D	ARCHITECTURAL DETAILS (STAIRCASE)	建筑细节详图(楼梯)	30/07/2010	•
DT 19E	ARCHITECTURAL DETAILS (STAIRCASE)	建筑细节详图(楼梯)	30/07/2010	•
DT 19F	BATHROOM DETAILS	浴室细节详图	15/12/2010	•
DT 19G	MILLWORK DETAILS (WINE CELLAR)	木工制品详图(酒窖)	30/07/2010	•
DT 19H	MILLWORK DETAILS (WINE CELLAR #B2)	木工制品详图(地下二层酒窖)	30/07/2010	•
DT 19I	MILLWORK DETAILS (WINE CELLAR #B2)	木工制品详图(地下二层酒窖)	30/07/2010	•
DT 19J	MILLWORK DETAILS (THEATER #B1)	木工制品详图(地下二层剧场)	30/07/2010	•
DT 19K	MILLWORK DETAILS (SPA LAVATORY COUNTER #B1)	木工制品详图(地下二层更衣室中心存物柜)	30/07/2010	•
DT 19L	MILLWORK DETAILS (SPA LOCKER #B1)	木工制品详图(地下二层更衣室储物柜)	30/07/2010	•
DT 19M	MILLWORK DETAILS (DISPLAY NICHE #L1 MEETING RM)	木工制品详图(一层会议室展示架)	30/07/2010	•
DT 19N	MILLWORK DETAILS (TV/ DISCLOSET UNIT #L2 FAMILY RM)	木工制品详图(二层家庭影院柜)	30/07/2010	•
DT 19O	MILLWORK DETAILS (TV/ DISCLOSET UNIT #L2 FAMILY RM)	木工制品详图(二层家庭影院柜)	30/07/2010	•
DT 19P	MILLWORK DETAILS (UTILITY CLOSET #1)	木工制品详图(一层洗衣房)	30/07/2010	•
DT 19Q	MILLWORK DETAILS (WARDROBE #L2 MASTER BATH)	木工制品详图(二层主浴室衣柜)	30/07/2010	•
DT 19R	MILLWORK DETAILS (WARDROBE #L2 MASTER BATH)	木工制品详图(二层主浴室衣柜)	30/07/2010	•
DT 19S	MILLWORK DETAILS (WARDROBE #L2 MASTER BATH)	木工制品详图(二层主浴室衣柜)	30/07/2010	•
DT 19T	MILLWORK DETAILS (WARDROBE #L2 BED ROOM 1)	木工制品详图(二层卧室衣柜)	30/07/2010	•
DT 19U	MILLWORK DETAILS (WARDROBE #L2 BED ROOM 1)	木工制品详图(二层卧室衣柜)	30/07/2010	•
DT 19V	MILLWORK DETAILS (WARDROBE #L2 BED ROOM 2)	木工制品详图(二层卧室衣柜)	30/07/2010	•
DT 19W	MILLWORK DETAILS (WARDROBE #L2 BED ROOM 2)	木工制品详图(二层卧室衣柜)	30/07/2010	•
DT 19X	MILLWORK DETAILS (WARDROBE #L2 BED ROOM 3)	木工制品详图(二层卧室衣柜)	15/12/2010	•
DT 19Y	MILLWORK DETAILS (WARDROBE #L2 BED ROOM 3)	木工制品详图(二层卧室衣柜)	30/07/2010	•
DT 19Z	MILLWORK DETAILS (WARDROBE #L2 BED ROOM 3)	木工制品详图(二层卧室衣柜)	30/07/2010	•
DT 19AA	MILLWORK DETAILS (PARTITION WALL #L2 BED ROOM 3)	木工制品详图(二层卧室隔墙)	15/12/2010	•
DT 19AB	MILLWORK DETAILS (PARTITION WALL #L2 BED ROOM 3)	木工制品详图(二层卧室隔墙)	15/12/2010	•
DT 19AC	CEILING DETAILS	电梯详图	15/12/2010	•



© COPYRIGHT BY HIRSCH/BEDNER AND ASSOCIATES ALL RIGHTS RESERVED.



1 FIXTURE/FURNISHING PLAN (LEVEL 2)  
Scale: 1:50 家具布置图 (二层)



KEY PLAN 分区索引图  
SCALE: 1:200



财富公馆 中国北京

FORTUNE GONGGUAN  
BEIJING, CHINA

VILLA - A2  
FIXTURE & FURNISHING  
PLAN  
LEVEL 2

别墅-A2  
家具布置  
平面图  
二层

REVISIONS	DATE
REVISION 3	10/01/2011
REVISION 2	15/12/2010
REVISION 1	30/07/2010

This drawing is for information only to be used by the contractor as a general arrangement of interior conditions. It has been made from available information, however measurements are to be verified on project site. This drawing must be verified and approved prior to final detailing and fabrication.

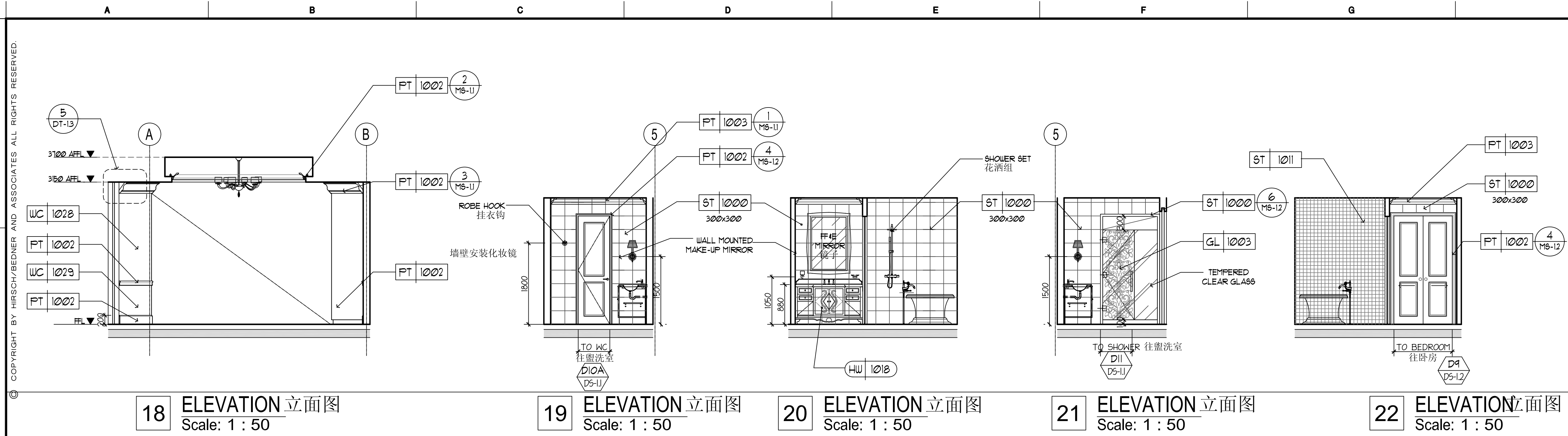
This drawing is the property of HIRSCH BEDNER AND ASSOCIATES and is not to be reproduced or copied in whole or in part. It is only to be used for the project and site specifically identified herein and is not to be used on any other project. It is to be returned upon request.

APPROVED  
DRAWN BY  
DATE 08/07/10  
SCALE 1: 50 (A1)

SHEET No.  
FF  
1.9  
PROJECT No.  
10129.00

HIRSCH BEDNER ASSOCIATES ■ DESIGN CONSULTANTS ■ 3216 NEBRASKA AVE ■ SANTA MONICA CA 90404-1183 ■ 310-829-9087





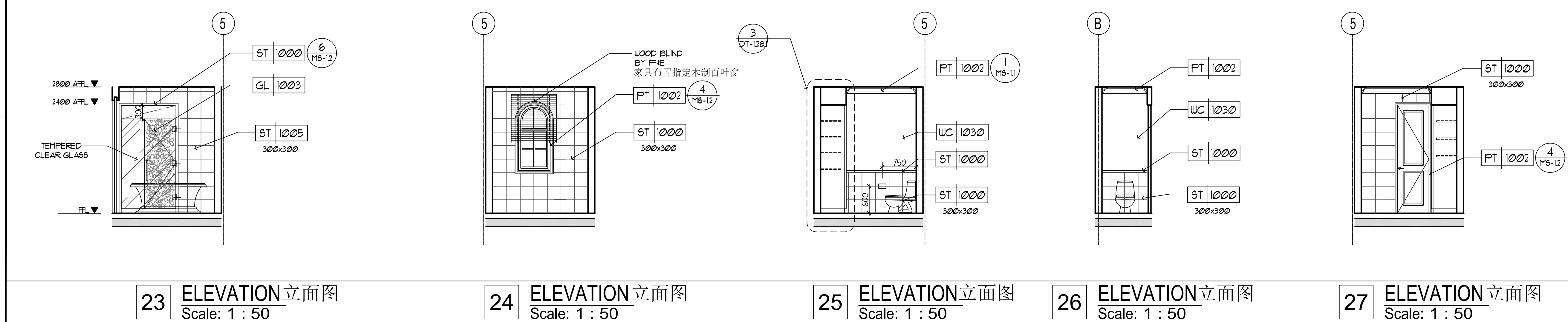
18 ELEVATION 立面图  
Scale: 1 : 50

19 ELEVATION 立面图  
Scale: 1 : 50

20 ELEVATION 立面图  
Scale: 1 : 50

21 ELEVATION 立面图  
Scale: 1 : 50

22 ELEVATION 立面图  
Scale: 1 : 50



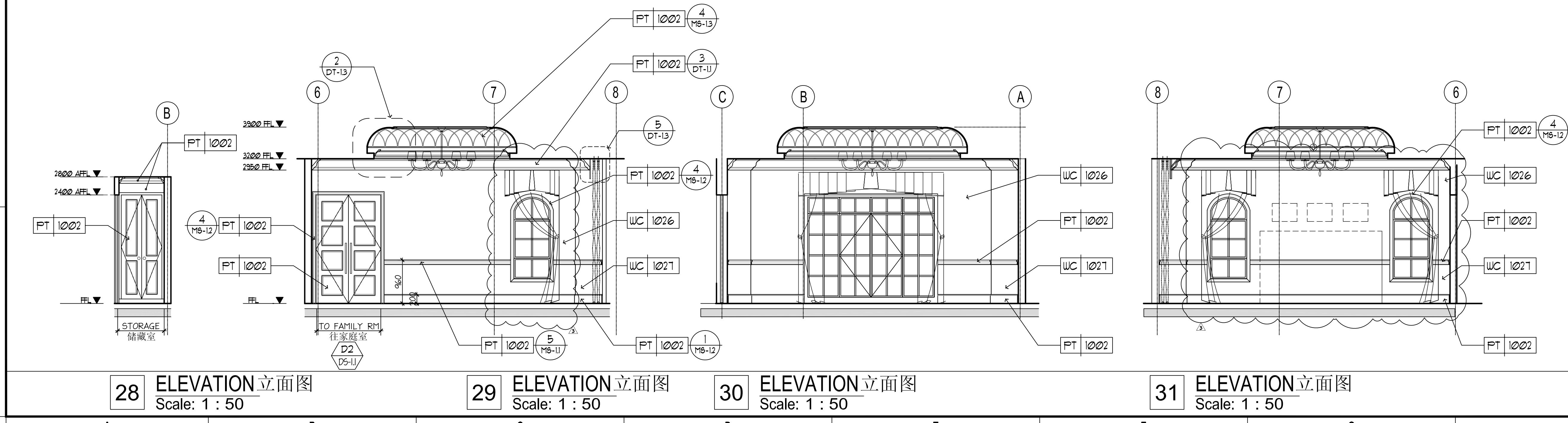
23 ELEVATION 立面图  
Scale: 1 : 50

24 ELEVATION 立面图  
Scale: 1 : 50

25 ELEVATION 立面图  
Scale: 1 : 50

26 ELEVATION 立面图  
Scale: 1 : 50

27 ELEVATION 立面图  
Scale: 1 : 50



28 ELEVATION 立面图  
Scale: 1 : 50

29 ELEVATION 立面图  
Scale: 1 : 50

30 ELEVATION 立面图  
Scale: 1 : 50

31 ELEVATION 立面图  
Scale: 1 : 50



财富公馆 中国北京

FORTUNE GONGGUAN  
BEIJING, CHINA

VILLA - A2  
LEVEL 2  
BEDROOM/BATHROOM  
INTERIOR ELEVATIONS

别墅 - A2  
二层  
卧房/浴室  
室内立面图

REVISIONS	DATE
3	REVISION 3 10/01/2011
2	REVISION 2 15/12/2010
1	REVISION 1 30/07/2010

APPROVED

DRAWN BY NY

DATE 08/07/10

SCALE 1 : 50

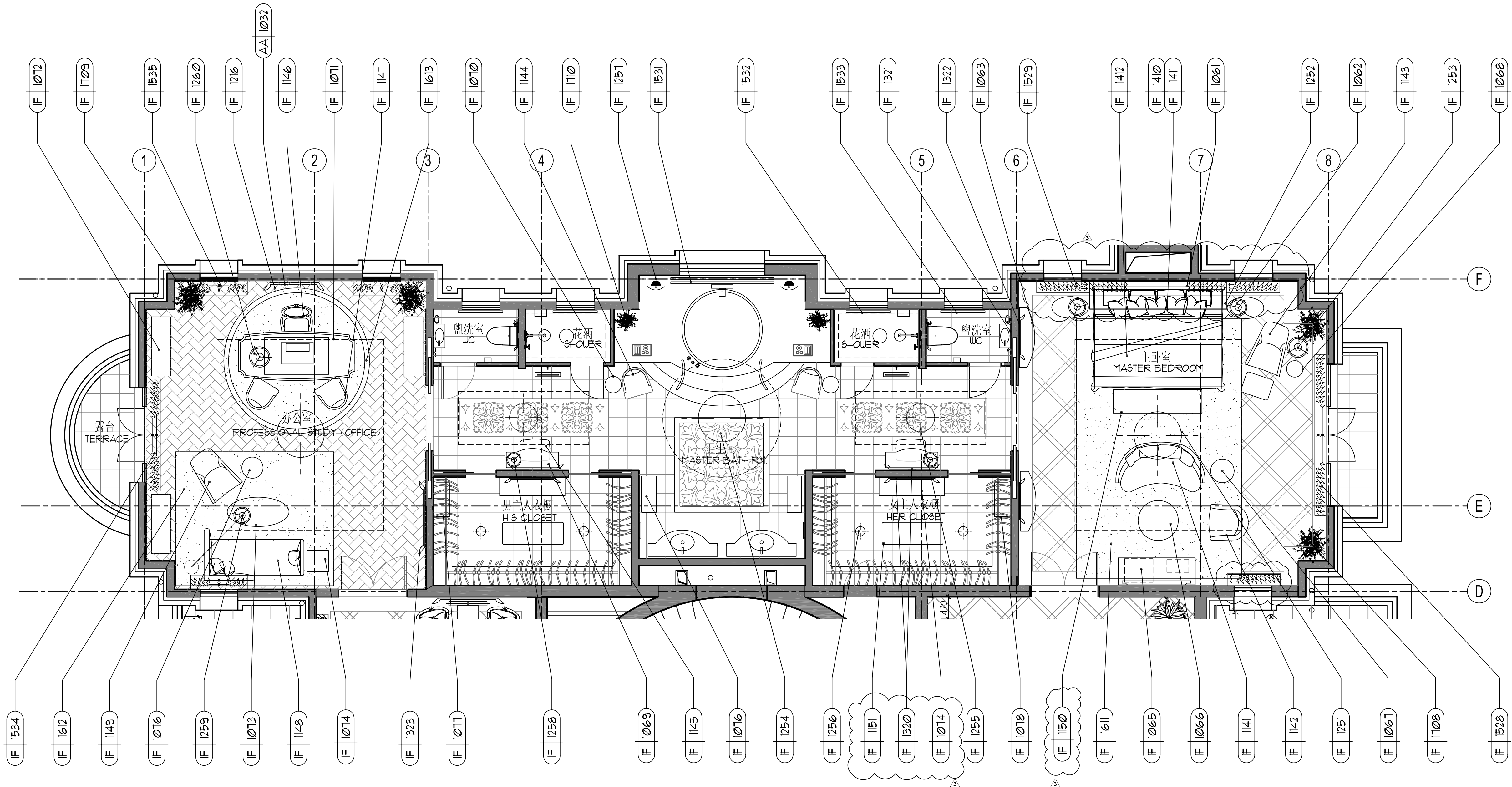
SHEET No.  
**EL 1.9.3**  
PROJECT No.  
10129.00

COPYRIGHT BY HIRSCH/BEDNER AND ASSOCIATES ALL RIGHTS RESERVED.

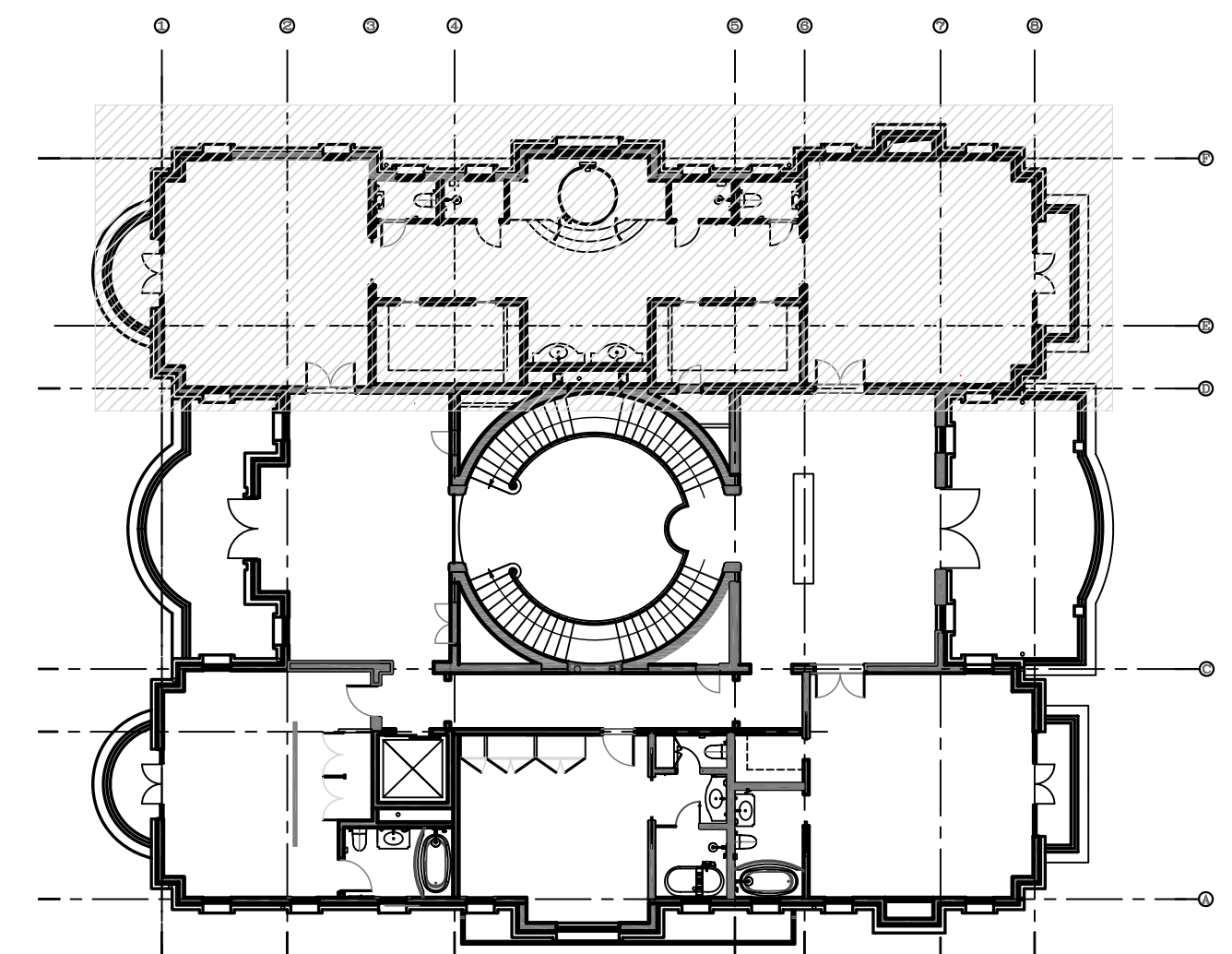
HIRSCH BEDNER ASSOCIATES ■ DESIGN CONSULTANTS ■ 3216 NEBRASKA AVE ■ SANTA MONICA CA 90404-1183 ■ 310-829-9087



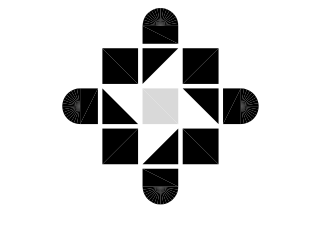
© COPYRIGHT BY HIRSCH/BEDNER AND ASSOCIATES ALL RIGHTS RESERVED.



1 FURNITURE/FURNISHING PLAN (LEVEL 2)  
Scale: 1:50 家具布置图 (二层)



KEY PLAN 分区索引图  
SCALE: 1:200



WWW.HBADESIGN.COM

FORTUNE GONGGUAN  
BEIJING, CHINA

VILLA - A2  
FIXTURE & FURNISHING  
PLAN  
LEVEL 2

别墅 - A2  
家具布置  
平面图  
二层

REVISIONS	DATE
REVISION 3	10/01/2011
REVISION 2	15/12/2010
REVISION 1	30/07/2010

This drawing is for information only to be used by the contractors as a general arrangement of interior conditions. It has been made from available information; however, measurements are to be verified on project site. This drawing must be verified and approved prior to final detailing and fabrication.

APPROVED  
DATE 08/07/10  
SCALE 1:50 (A1)

SHEET No.  
FF  
1.10  
PROJECT No.  
10129.00

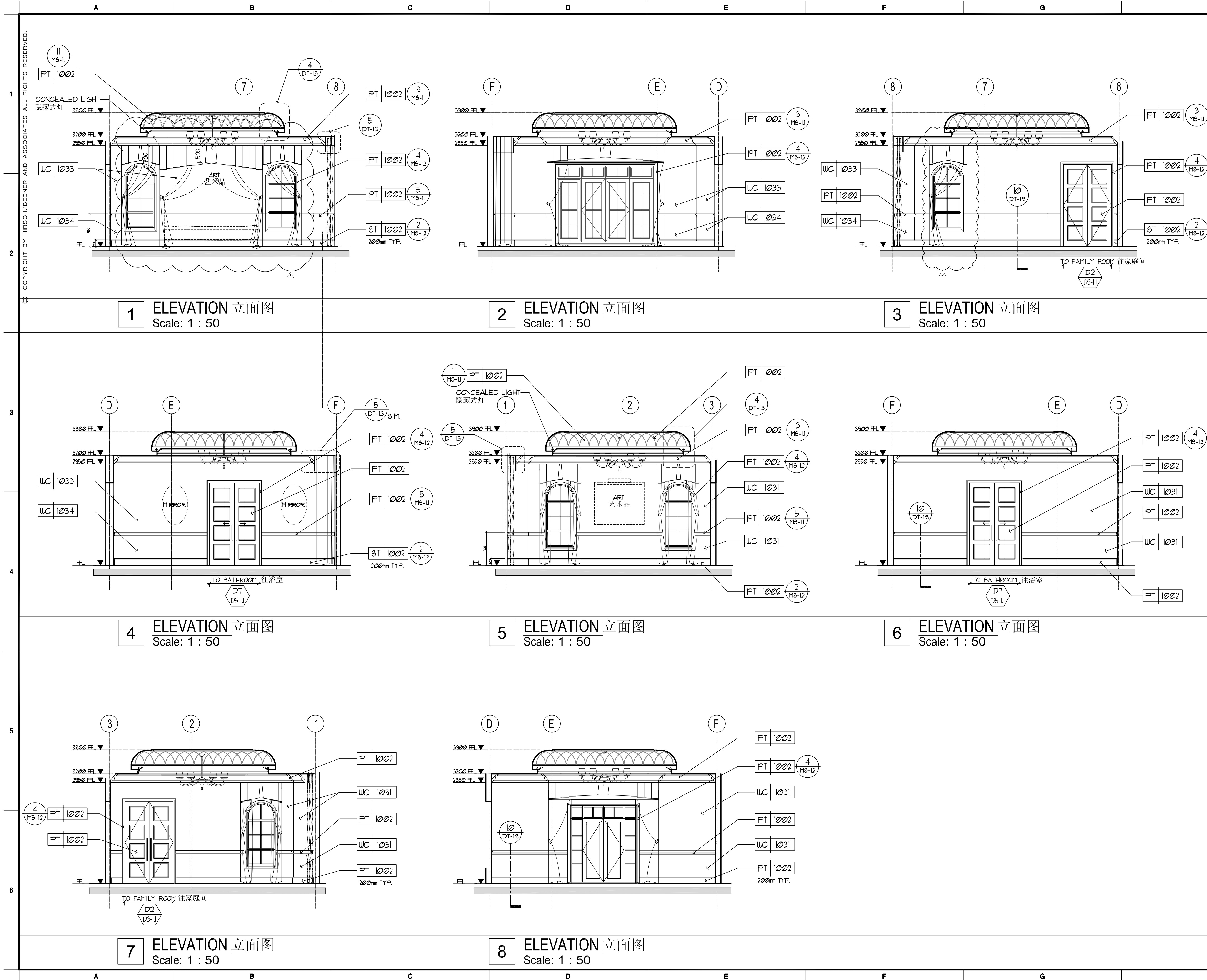
HIRSCH BEDNER ASSOCIATES ■ DESIGN CONSULTANTS ■ 3216 NEBRASKA AVE ■ SANTA MONICA CA 90404-1183 ■ 310-829-9087





NORTH  
北





财富公馆 中国北京

FORTUNE GONGGUAN

BEIJING, CHINA

VILLA - A2

LEVEL 2

MASTER BEDROOM/ STUDY ROOM

INTERIOR ELEVATIONS

别墅-A2

二层

主卧室/书房

室内立面图

REVISIONS	DATE
3	REVISION 3 11/01/2011
2	REVISION 2 15/12/2010
1	REVISION 1 30/07/2010

APPROVED

DRAWN BY NY

DATE 08/07/10

SCALE 1:50

SHEET No.

EL

1.10.1

PROJECT No.

10129.00

COPYRIGHT BY HIRSCH/BEDNER AND ASSOCIATES ALL RIGHTS RESERVED.

HIRSCH BEDNER ASSOCIATES ■ DESIGN CONSULTANTS ■ 3216 NEBRASKA AVE ■ SANTA MONICA CA 90404-1183 ■ 310-829-9087