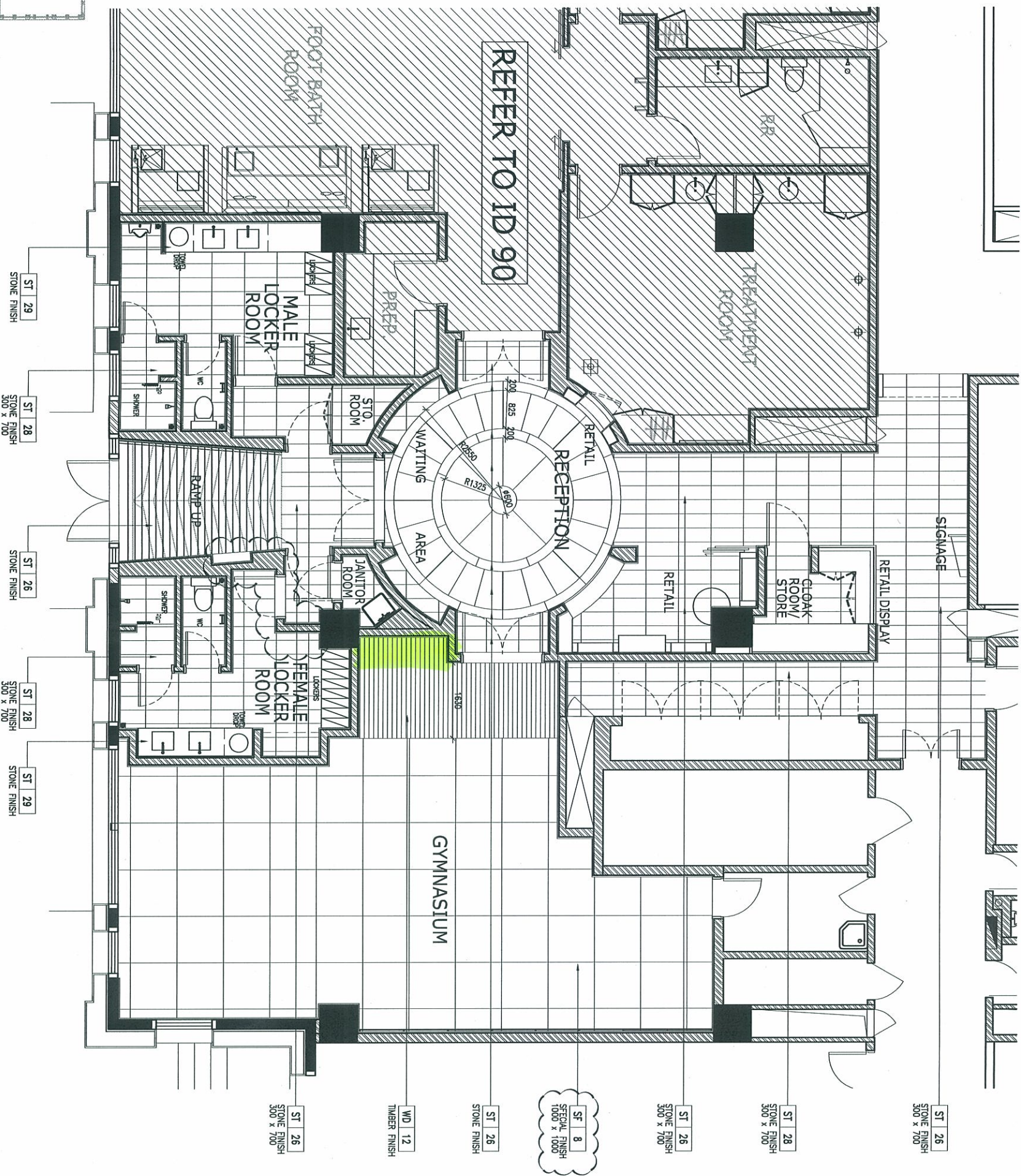
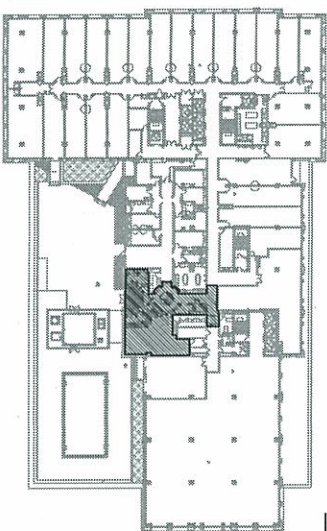


FLOOR FINISHES PLAN



Wilson & Associates, Inc.
Interior Architectural Design

Interior Architectural Design

DALLAS

3811 Turin Creek Blvd.,
Suite 1500 Dallas, Texas 75219
Tel: (214) 5216733
Fax: (214) 5210207

3 Anson Road,
#2-01 Springfield Towne
Singapore 079509
Tel: (65) 63275787
Fax: (65) 63275786

NEW YORK

475 Park
23rd Floor

New York
Tel: (212)

LOS ANGELES
6333 Wilshire Boulevard
Suite 611, Beverly Hills,
CA 90210
Tel: (310) 213-1501
Fax: (213) 213-1501

SHANGHAI
300 Huohuai Zheng Road
Hong Kong New World
Tel: (86) 21 6248 1111
Fax: (27) 116364240

California
Tel. (913)

Fax: (214)

1001

GENERAL NOTES:
1. ALL DESIGNS ARE SOLE PROPERTY OF WILSON ASSOCIATES, INC. AND CANNOT BE USED WITHOUT WRITTEN PERMISSION.

2. DO NOT

3. ALL DUE

OTHER

5. THE CONTRACTOR IS TO NOTIFY THE INTERIOR IN WRITING OF ANY DISCREPANCIES IMMEDIATELY UPON OBTAINING NECESSARY CLARIFICATION;

5. THE ID

CONTENTS

DRAWING:

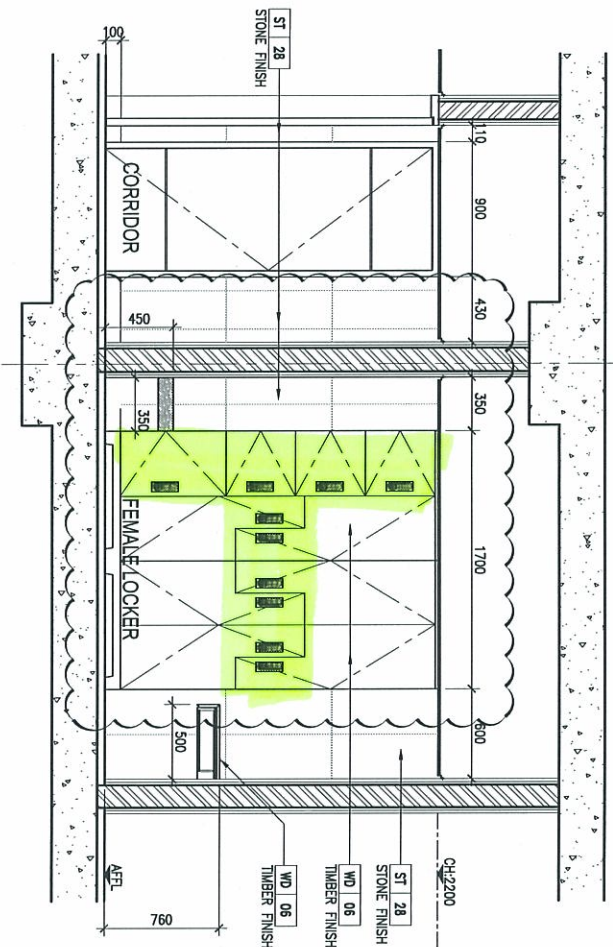
100

1

10

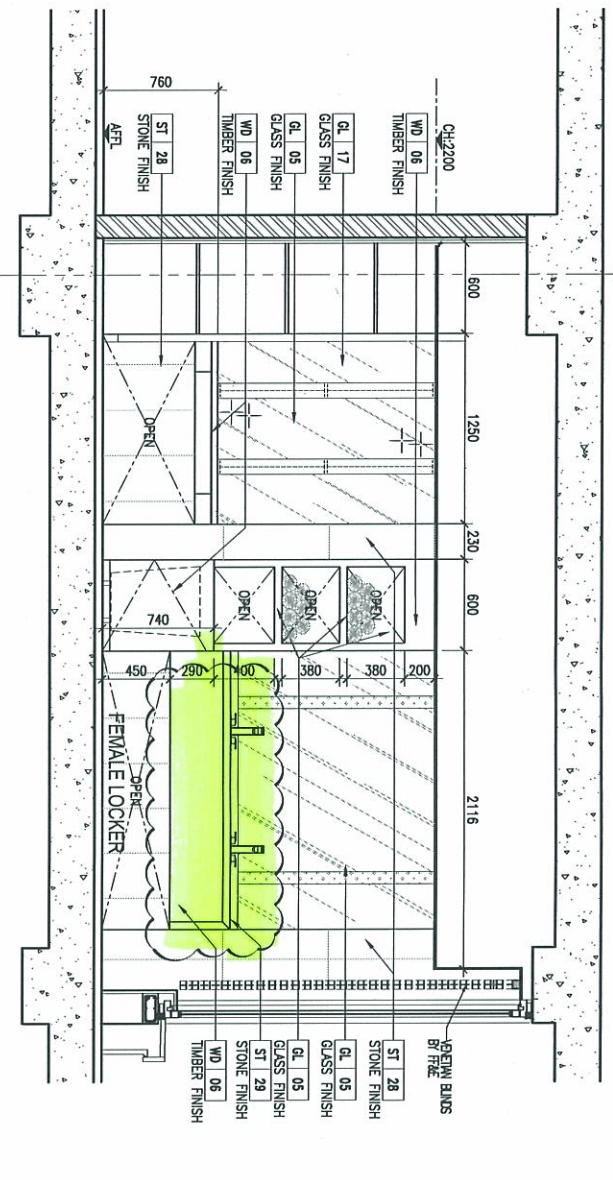
1

8



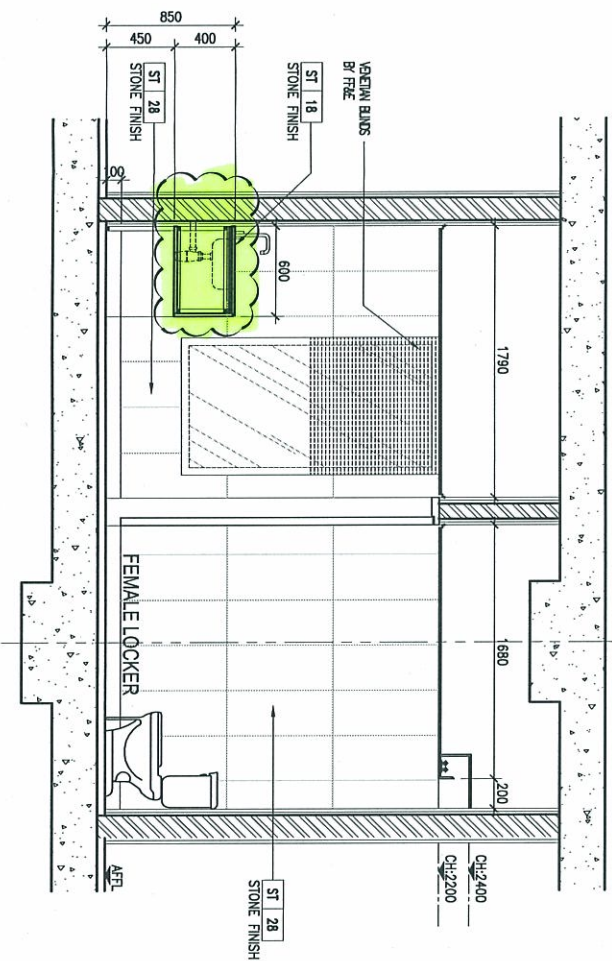
11 SECTIONAL ELEVATION 剖面图

D



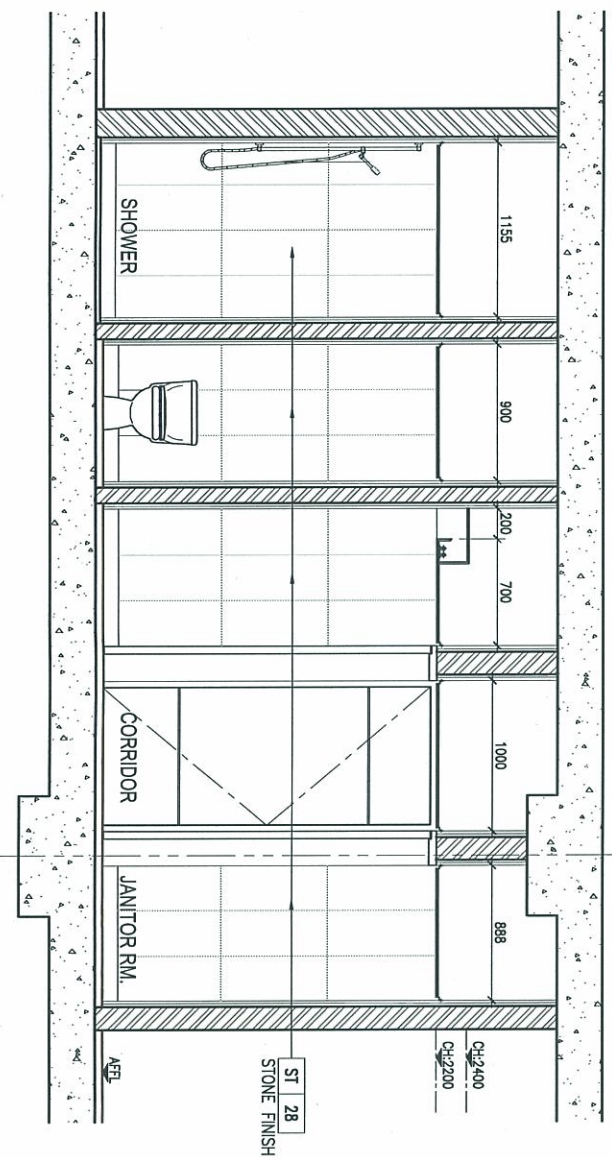
12 SECTIONAL ELEVATION 剖面图

8



13 SECTIONAL ELEVATION 剖面图

D



14 SECTIONAL ELEVATION 剖面图

06 SECTIONAL ELEVATIONS

Wilson & Associates Inc.

Interior Architectural Design

DALLAS
3811 North Central Expressway, Suite 1500, Dallas, Texas 75219
Tel: (214) 512-1234
Fax: (214) 512-1235
NEW YORK
250 West 57th Street, New York, New York 10019
Tel: (212) 512-1234
Fax: (212) 512-1235
LOS ANGELES
3883 Wilshire Boulevard, Suite 1000, Los Angeles, California 90010
Tel: (310) 512-1234
Fax: (310) 512-1235
SINGAPORE
3 Raffles Place, #25-01, Singapore Tower, Singapore 048618
Tel: (65) 6337-7878
Fax: (65) 6337-7879
SHANGHAI
200 Nanchang Road, Suite 1803, Shanghai 200001, P.R. China
Tel: (86) 21-6337-7878
Fax: (86) 21-6337-7879

GENERAL NOTES:
1. ALL DIMENSIONS ARE TO FACE UNLESS OTHERWISE NOTED.
2. ALL DIMENSIONS ARE IN MILLIMETERS, UNLESS SPECIFIED OTHERWISE.
3. THE CONTRACTOR IS TO VERIFY THE INTERIOR DESIGNER'S DIMENSIONS AND SPECIFICATIONS IMMEDIATELY AND REPORT ANY DISCREPANCIES TO THE DESIGNER.
4. THE DIMENSIONS ARE TO BE CHECKED AND VERIFIED PRIOR TO COMMENCEMENT OF WORK.
5. THE CONTRACTOR IS TO VERIFY THE INTERIOR DESIGNER'S DIMENSIONS AND SPECIFICATIONS IMMEDIATELY AND REPORT ANY DISCREPANCIES TO THE DESIGNER.
6. THE DIMENSIONS ARE TO BE CHECKED AND VERIFIED PRIOR TO COMMENCEMENT OF WORK.

HILTON WANGFUJING
希尔顿王府井酒店
BEIJING, CHINA
中国北京

PROJECT NO: 2858
DRAWING NO: ID91.6.4
REV: 0

CONSTRUCTION

DATE OF ISSUANCE: 24 APRIL 2008

ISSUED FOR:
Scale: Drawn by: Checked by: Approved by:
1:25 SHAWN PERRYMAN JONAH

LEVEL 6
SPA RECEPTION AREA, MALE & FEMALE
LOCKER ROOM AND GYMNASIUM
SECTIONAL ELEVATIONS 11 to 14

Revision No.	Revision Description	Date
1	Initial Design	24 APRIL 2008
2	Revised Design	24 APRIL 2008
3	Revised Design	24 APRIL 2008
4	Revised Design	24 APRIL 2008
5	Revised Design	24 APRIL 2008
6	Revised Design	24 APRIL 2008
7	Revised Design	24 APRIL 2008
8	Revised Design	24 APRIL 2008
9	Revised Design	24 APRIL 2008
10	Revised Design	24 APRIL 2008
11	Revised Design	24 APRIL 2008
12	Revised Design	24 APRIL 2008
13	Revised Design	24 APRIL 2008
14	Revised Design	24 APRIL 2008
15	Revised Design	24 APRIL 2008
16	Revised Design	24 APRIL 2008
17	Revised Design	24 APRIL 2008
18	Revised Design	24 APRIL 2008
19	Revised Design	24 APRIL 2008
20	Revised Design	24 APRIL 2008
21	Revised Design	24 APRIL 2008
22	Revised Design	24 APRIL 2008
23	Revised Design	24 APRIL 2008
24	Revised Design	24 APRIL 2008
25	Revised Design	24 APRIL 2008
26	Revised Design	24 APRIL 2008
27	Revised Design	24 APRIL 2008
28	Revised Design	24 APRIL 2008
29	Revised Design	24 APRIL 2008
30	Revised Design	24 APRIL 2008
31	Revised Design	24 APRIL 2008
32	Revised Design	24 APRIL 2008
33	Revised Design	24 APRIL 2008
34	Revised Design	24 APRIL 2008
35	Revised Design	24 APRIL 2008
36	Revised Design	24 APRIL 2008
37	Revised Design	24 APRIL 2008
38	Revised Design	24 APRIL 2008
39	Revised Design	24 APRIL 2008
40	Revised Design	24 APRIL 2008
41	Revised Design	24 APRIL 2008
42	Revised Design	24 APRIL 2008
43	Revised Design	24 APRIL 2008
44	Revised Design	24 APRIL 2008
45	Revised Design	24 APRIL 2008
46	Revised Design	24 APRIL 2008
47	Revised Design	24 APRIL 2008
48	Revised Design	24 APRIL 2008
49	Revised Design	24 APRIL 2008
50	Revised Design	24 APRIL 2008
51	Revised Design	24 APRIL 2008
52	Revised Design	24 APRIL 2008
53	Revised Design	24 APRIL 2008
54	Revised Design	24 APRIL 2008
55	Revised Design	24 APRIL 2008
56	Revised Design	24 APRIL 2008
57	Revised Design	24 APRIL 2008
58	Revised Design	24 APRIL 2008
59	Revised Design	24 APRIL 2008
60	Revised Design	24 APRIL 2008
61	Revised Design	24 APRIL 2008
62	Revised Design	24 APRIL 2008
63	Revised Design	24 APRIL 2008
64	Revised Design	24 APRIL 2008
65	Revised Design	24 APRIL 2008
66	Revised Design	24 APRIL 2008
67	Revised Design	24 APRIL 2008
68	Revised Design	24 APRIL 2008
69	Revised Design	24 APRIL 2008
70	Revised Design	24 APRIL 2008
71	Revised Design	24 APRIL 2008
72	Revised Design	24 APRIL 2008
73	Revised Design	24 APRIL 2008
74	Revised Design	24 APRIL 2008
75	Revised Design	24 APRIL 2008
76	Revised Design	24 APRIL 2008
77	Revised Design	24 APRIL 2008
78	Revised Design	24 APRIL 2008
79	Revised Design	24 APRIL 2008
80	Revised Design	24 APRIL 2008
81	Revised Design	24 APRIL 2008
82	Revised Design	24 APRIL 2008
83	Revised Design	24 APRIL 2008
84	Revised Design	24 APRIL 2008
85	Revised Design	24 APRIL 2008
86	Revised Design	24 APRIL 2008
87	Revised Design	24 APRIL 2008
88	Revised Design	24 APRIL 2008
89	Revised Design	24 APRIL 2008
90	Revised Design	24 APRIL 2008
91	Revised Design	24 APRIL 2008
92	Revised Design	24 APRIL 2008
93	Revised Design	24 APRIL 2008
94	Revised Design	24 APRIL 2008
95	Revised Design	24 APRIL 2008
96	Revised Design	24 APRIL 2008
97	Revised Design	24 APRIL 2008
98	Revised Design	24 APRIL 2008
99	Revised Design	24 APRIL 2008
100	Revised Design	24 APRIL 2008